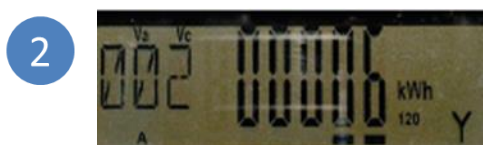


# e163 Job Aid: How to Read the New RF Meter

This Job Aid describes the Landis+Gyr RF meter screens used to confirm meter status after an install or meter replacement is completed. These six information screens loop as the meter operates.



**1** The first screen – marked with the number **001** – shows how much **energy** has been **delivered to the property**. The display does not reset to zero each month. In order to get a handle on the monthly usage, the customer will check the total on the same date each month and subtract the prior month's reading from the latest reading.



**2** The next screen, marked with the number **002**, shows how much **energy the property has delivered to the energy grid only** if there are solar panels or another type of generation installation. If the customer doesn't have one, this screen will remain at zero. This display also does not reset. If the customer wants to take a monthly reading, they will have to check on the same date each month and subtract the prior month's reading from the latest reading.



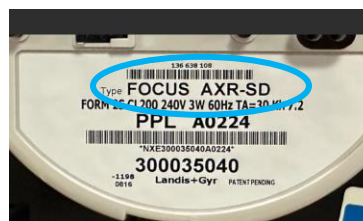
**3** The next screen, marked with the number **003**, displays demand – the peak amount of electrical energy the property has consumed

during the day. Unlike other displays, the demand resets each night.



**4** The next screen will say **"CLS"** if the switch inside the meter is **closed** and power is flowing to the property. **It will say "OPN"** if the switch is **open** and no power is being delivered. If the account is in good standing, the screen should read **"CLS."** Confirm Switch Status, **and complete the CMO information for the install or replacement.**

*NOTE: CLS and OPN will only be displayed on single phase meters with a switch inside to be open or closed. OPN and CLS will not be displayed for 3-Phase meters (and some single-phase meters), as they do not have an internal switch. Single-phase meters with OPN / CLS will have an SD on the nameplate.*



**5** The next screen is blank. It can be used for troubleshooting.

6



**The last screen is simply a test** that shows all parts of the display are functioning.

Please note: There are a few meter types that do not include the Switch Status Screen. For example, the E0322 does not have the Switch Status display.

For all meter replacements, confirm the meter is operational before you complete the work order and all information on the CMO. This information will pair the premise and the meter for future communications from Command Center to the meter.