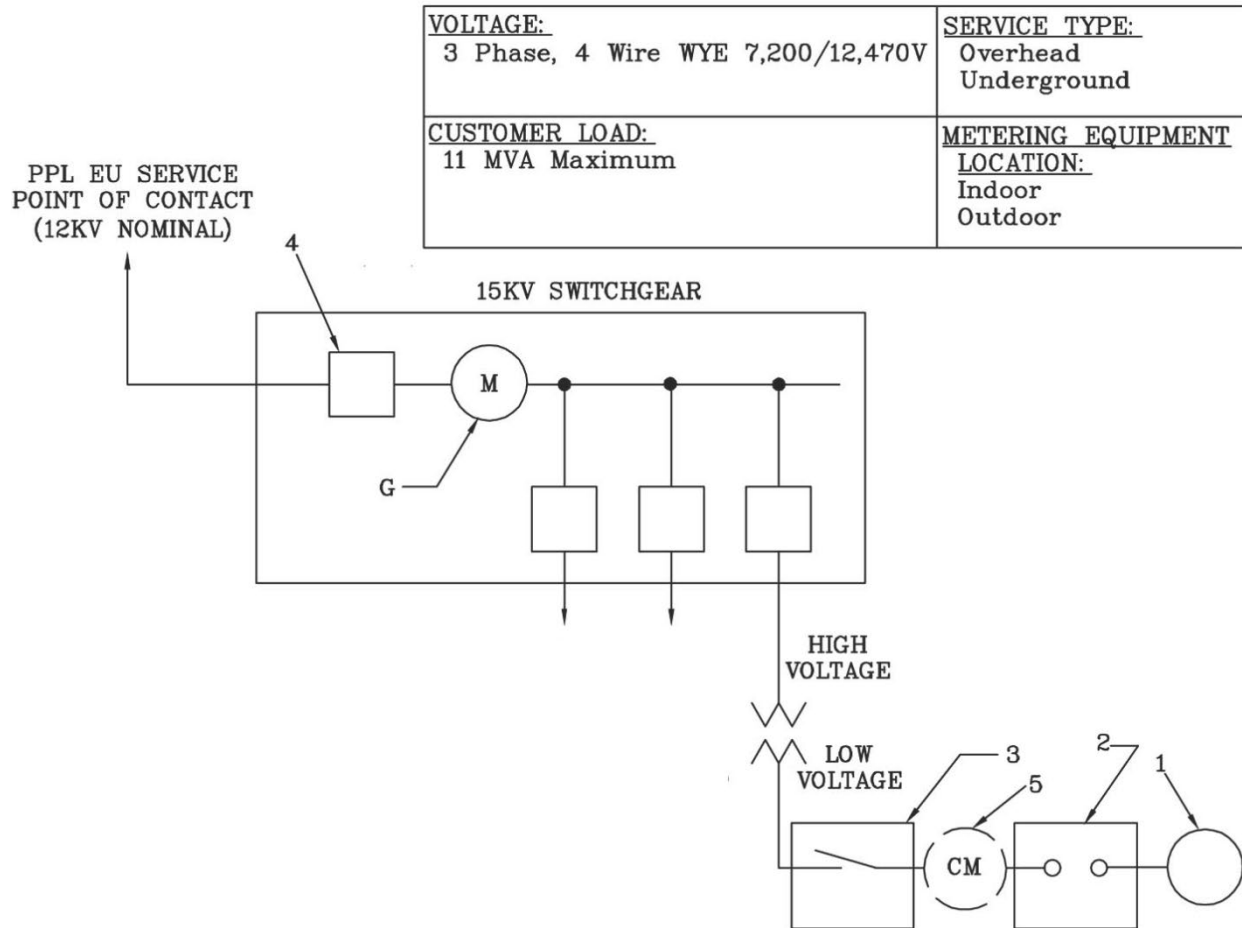


Sketch #59b Inverter-based renewable generation for 12kv switchgear installation



REV	DATE	APPROVED			RULES FOR ELECTRIC METER AND SERVICE INSTALLATIONS PPL ELECTRIC UTILITIES CORPORATION
		DRAFTER	SPONSOR	REVIEW	
0	3/18/11	-	MDB	-	RULES: 12, 28
1	8/15/16	NAP	NAP	-	



REMSI Sketches 51-100
Sketch #59b
6-52

0000-000-ST-6052
Custom ID: DCS 6-52
Revision: 01
Effective Date: 09/19/2016
Page 29 of 58

Sketch #59b Inverter-based renewable generation for 12kv switchgear installation (cont.)

CUSTOMER FURNISHES, INSTALLS, MAINTAINS:

1. DISTRIBUTED GENERATION SOURCE
2. INVERTER SHALL BE LABELED AS IEEE 1547/UL 1741 LISTED.
3. GENERATOR DISCONNECT SWITCH REQUIRED IF NOT INCLUDED IN THE INVERTER.
GENERATOR DISCONNECT MUST BE WITHIN LINE OF SIGHT OF THE METER.
4. FAULT INTERRUPTING DEVICE CAN BE CIRCUIT BREAKER OR FUSE.
5. CUSTOMER METERING FOR GENERATION IS OPTIONAL.

NOTES:

- A. SEE PPL EU CUSTOMER-OWNED GENERATION WEBSITE FOR MORE INFORMATION.
- B. APPLICATION FOR CUSTOMER-OWNED, INVERTER-BASED RENEWABLE GENERATION MUST BE COMPLETED. SEE CUSTOMER-OWNED GENERATION APPLICATIONS.
- C. PPL EU REQUIRES AN INDEPENDENT ELECTRICAL INSPECTION. THE INSPECTOR IS REQUIRED TO VERIFY THE IEEE/UL LISTING OF THE INVERTER.
- D. INSTALLATION MUST ADHERE TO REQUIREMENTS OF NATIONAL ELECTRICAL CODE ARTICLE 690 AND ARTICLE 705.
- E. ALL LABELING MUST BE IN ACCORDANCE WITH NEC ARTICLE 690.
- F. IN ADDITION TO NOTE D, PPL EU WILL INSTALL PERMANENT LABELING ON THE METER BASE (PPL EU CATALOG #1012171) AND PAD MOUNT TRANSFORMER (#1012171) OR POLE MOUNT TRANSFORMER (#1013816) UPON RECEIPT OF INSPECTION.
- G. METERING EQUIPMENT. SEE APPROPRIATE SKETCH FOR SERVICE TYPE AND SIZE TO DETERMINE METERING RESPONSIBILITIES. FOREIGN ENERGY SOURCES SHALL NOT BE CONNECTED DIRECTLY TO METERING EQUIPMENT. SEE RULE 12.
- H. IF A NEUTRAL CONNECTION EXISTS AT THE INVERTER, THE INVERTER NEUTRAL SHALL BE CONNECTED TO THE SERVICE NEUTRAL.
- I. CUSTOMER SHALL CONTACT PPL EU PRIOR TO ANY NEW INSTALLATIONS DEPICTED IN THIS SKETCH.

REV	DATE	APPROVED			RULES FOR ELECTRIC METER AND SERVICE INSTALLATIONS PPL ELECTRIC UTILITIES CORPORATION
		DRAFTER	SPONSOR	REVIEW	
0	3/18/11	-	MDB	-	RULES: 12, 28
1	8/15/16	NAP	NAP	-	

REMSI_S059BP1.dwg