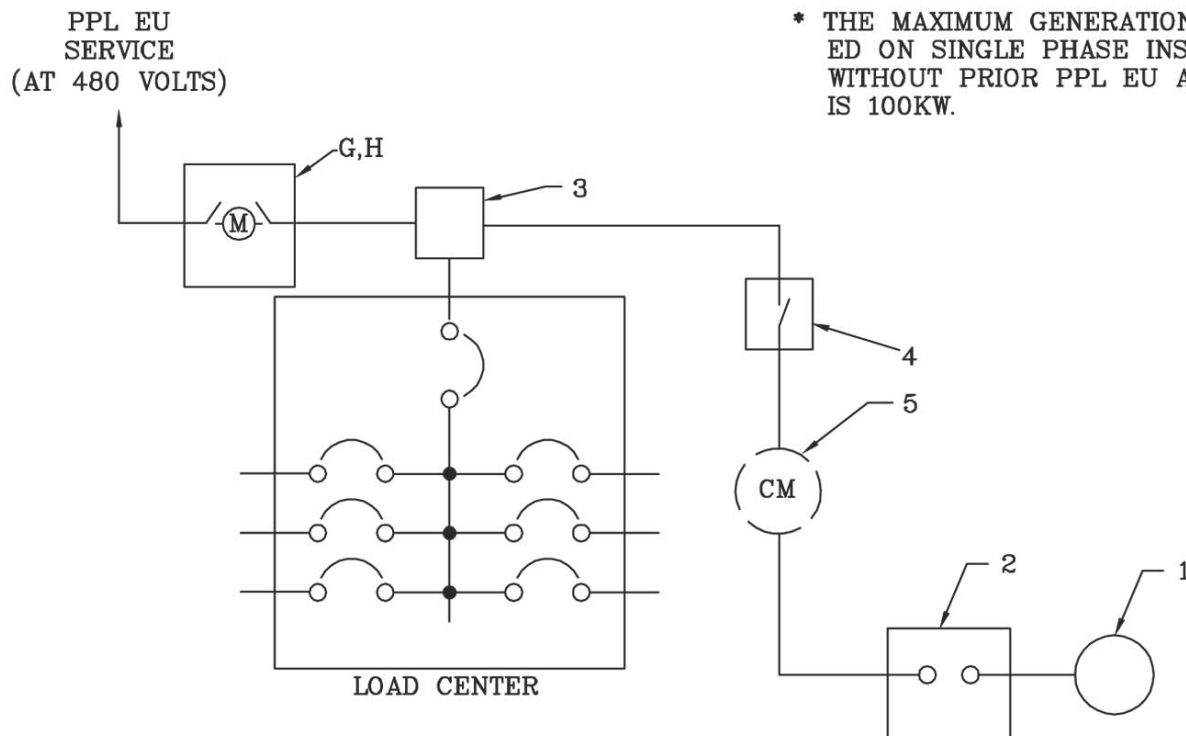


**Sketch #57a Inverter-based renewable generation for generator capacity over 20% of the load center bus bar rating for 480V, self-contained metering installations**

<b>VOLTAGE:</b> 1 Phase, 3 Wire Network 277/480V* 1 Phase, 3 Wire 240/480V* 3 Phase, 4 Wire WYE 277/480V	<b>SERVICE TYPE:</b> Overhead Underground
<b>AMPERAGE:</b> 400 A Maximum	<b>METER BASE LOCATION:</b> Outdoor

\* THE MAXIMUM GENERATION PERMITTED ON SINGLE PHASE INSTALLATION WITHOUT PRIOR PPL EU APPROVAL IS 100KW.



REV	DATE	APPROVED			<b>RULES FOR ELECTRIC METER AND SERVICE INSTALLATIONS</b> <b>PPL ELECTRIC UTILITIES CORPORATION</b>
		DRAFTER	SPONSOR	REVIEW	
0	3/18/11	-	MDB	-	RULES: 2, 12, 28
1	8/15/16	NAP	NAP	-	

REMSI\_S057AP1.dwg



**REMSI Sketches 51-100**  
**Sketch #57a**  
**6-52**

0000-000-ST-6052  
Custom ID: DCS 6-52  
Revision: 01  
Effective Date: 09/19/2016  
Page 19 of 58

**Sketch #57a Inverter-based renewable generation for generator capacity over 20% of the load center bus bar rating for 480V, self-contained metering installations (cont.)**

**CUSTOMER FURNISHES, INSTALLS, MAINTAINS:**

1. DISTRIBUTED GENERATION SOURCE
2. INVERTER SHALL BE LABELED AS IEEE 1547/UL 1741 LISTED.
3. SERVICE ENTRANCE RATED JUNCTION BOX. SEE RULE 2.
4. SERVICE ENTRANCE RATED FUSED DISCONNECT SWITCH FOR GENERATOR. GENERATOR DISCONNECT MUST BE WITHIN LINE OF SIGHT OF THE METER.
5. CUSTOMER METERING FOR GENERATION IS OPTIONAL.

**NOTES:**

- A. SEE PPL EU CUSTOMER-OWNED GENERATION WEBSITE FOR MORE INFORMATION.
- B. APPLICATION FOR CUSTOMER-OWNED, INVERTER-BASED RENEWABLE GENERATION MUST BE COMPLETED. SEE CUSTOMER-OWNED GENERATION APPLICATIONS.
- C. PPL EU REQUIRES AN INDEPENDENT ELECTRICAL INSPECTION. THE INSPECTOR IS REQUIRED TO VERIFY THE IEEE/UL LISTING OF THE INVERTER.
- D. INSTALLATION MUST ADHERE TO REQUIREMENTS OF NATIONAL ELECTRICAL CODE ARTICLE 690 AND ARTICLE 705.
- E. ALL LABELING MUST BE IN ACCORDANCE WITH NEC ARTICLE 690.
- F. IN ADDITION TO NOTE D, PPL EU WILL INSTALL PERMANENT LABELING ON THE METER BASE (PPL EU CATALOG #1012171) AND PAD MOUNT TRANSFORMER (#1012171) OR POLE MOUNT TRANSFORMER (#1013816) UPON RECEIPT OF INSPECTION.
- G. METERING – 480V SELF-CONTAINED – SEE SELF-CONTAINED 480V METERING SERIES ORGANIZATION MAP TO DETERMINE APPROPRIATE SKETCH FOR SERVICE TYPE AND SIZE, FOR METERING REQUIREMENTS, AND RESPONSIBILITIES. FOREIGN ENERGY SOURCES SHALL NOT BE CONNECTED DIRECTLY TO METERING EQUIPMENT. SEE RULE 12.
- H. INSTALLATIONS REQUIRING 480V SELF-CONTAINED METERING FOLLOWING SKETCH #71 OR SKETCH #72 REQUIRES PPL EU REVIEW AND APPROVAL.
- I. IF A NEUTRAL CONNECTION EXISTS AT THE INVERTER, THE INVERTER NEUTRAL SHALL BE CONNECTED TO THE SERVICE NEUTRAL.
- J. CUSTOMER SHALL CONTACT PPL EU PRIOR TO ANY NEW INSTALLATIONS DEPICTED IN THIS SKETCH.

REV	DATE	APPROVED			<b>RULES FOR ELECTRIC METER AND SERVICE INSTALLATIONS</b> PPL ELECTRIC UTILITIES CORPORATION
		DRAFTER	SPONSOR	REVIEW	
0	3/18/11	-	MDB	-	RULES: 2, 12, 28
1	8/15/16	NAP	NAP	-	

REMSI\_S057AP1.dwg